

Sperry Tree Care

NEWSLETTER

INSIDE THIS ISSUE

 PG. 1

Welcome Message

 PG. 2

Winter Projects

 PG. 3

Tree in the Spotlight

 PG. 4

Leaf It to Us



Winter
2023

WELCOME TO OUR WINTER NEWSLETTER!

The cold days of winter are for enjoying hot coffee and warm blankets while snuggled on the couch dreaming of the warm days ahead. When the temps are low and the sun sets early most of us are not spending copious amounts of time outside. However, it is not wise to ignore our yards completely until the warm weather arrives. Some trees, such as fruit trees, need tending to during the dormant season before warm weather makes the first buds appear. And winter still has a way to go, so we should be prepared to care for our trees and plants if we experience snow or ice.

Winter Projects



FRUIT TREES

Holiday decorations may still be present in your yard, but it is also time to turn your attention to your fruit trees. Pruning in the winter months before the first buds appear will help you to have better fruit production this summer. It's important to prune before the buds appear, otherwise you will prune away the beginnings of this year's fruit.

Late winter /early spring is also the perfect time to plant bare-root fruit trees. This allows them to establish before the growing season is in full swing. Our team of ISA Certified Arborists can help you to select and plant fruit trees. Call us today to schedule a consultation.

EVERGREENS

Late winter or early spring is also the time to prune evergreen shrubs like arborvitae, bay laurel, and boxwood as well as evergreen trees such as juniper, cypress, evergreen magnolias and fir. Dormant pruning can rejuvenate evergreens, particularly weaker plants, by removing dead or diseased wood. This allows the plants stored energy to go towards the remaining branches and new growth when the warm weather returns.



CLEAR SNOW

Snow has blanketed the Willamette Valley several times over the last few years. The weight of snow can cause considerable damage to your plants, especially common hedge plants such as Arborvitae. If this winter does bring snow, we recommend knocking snow from your plants, as long as it is safe to do so.

Don't shake your plants. Use a broom, or your hands, to sweep snow away. Always gently sweep in an upward motion to dislodge the snow. Sweeping downwards could break or bend branches. For best results, remove snow when you have 1-2 inches of accumulation. Repeat as needed.



What about ice? Do not try to remove ice. Doing so is likely to cause damage to the branches. It is best to just wait and let it melt on its own.

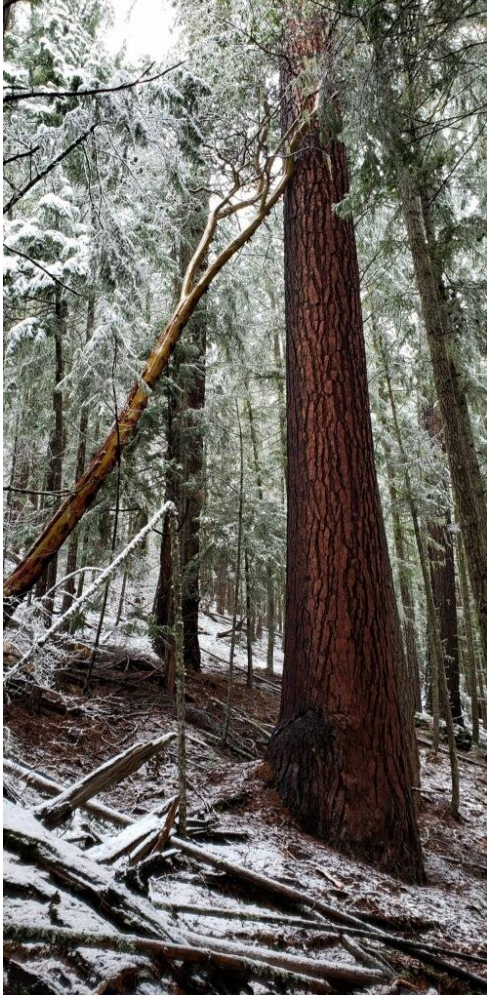


FERTILIZE YOUNG TREES AND SHRUBS

In late winter or early spring, young trees and shrubs can benefit from being fertilized. Fertilizing at this time of year can help these plants to grow quicker and develop more successfully. We recommend organic fertilizing options to promote active growth in spring. Even mature trees can benefit from fertilizing, especially if they have been attacked by insects or disease.

Applying fertilizer just before a rain is great if you can time it right. However, if there is no rain on the horizon, be sure to water-in the fertilizer to ensure that the product will be washed into the soil so that it can reach the roots.

Tree in the Spotlight



PONDEROSA PINE (*Pinus Ponderosa*)

The **Ponderosa Pine** is an iconic tree of the West which can grow over 200 feet tall and 25 feet in circumference. The largest specimen in the world, named “Big Tree”, is located in La Pine State Park along the Deschutes River. It is over 500 years old and 162 feet tall.

Pros

- Very drought tolerant once established
- Attractive bark and form
- Bark has a pleasant odor of terpene, vanilla or butterscotch
- Deeply rooted
- Adapted to fire; bark can be up to 4 inches thick
- Well adapted to drought and climate change
- Seeds eaten by many birds and small mammals

Cons

- Needs full sun
- Requires well-drained soil
- Prone to various beetle attacks
- Prone to foliar fungal needle diseases following long, wet springs

Newsletter
Subscriber
Savings

SPERRY TREE CARE CO.

5% OFF

5% off pruning accepted by March 31, 2023.
May not be combined with other offers. Code: WINT23

Leaf It to Us

MAYBE YOUR TREE CAN BE SAVED



As so many experienced, a large number of trees failed in a multitude of ways as a result of loads from snow and ice storms in previous years. The storms caused everything from branch and fork failure to main stem and root failure. Sometimes, the damage is too extensive and results in an unhealthy or hazardous tree that must be removed. There are times though when the damage looks worse than it actually is and the tree can be saved.

Cracked branches, forks and stems can sometimes be salvaged through the use of pruning and artificial support systems like braces and cables. Small ornamental or fruit trees that have up-rooted can sometimes be pulled back up, roots re-buried, and guy-wired to stabilize them. Even small shrubs with split forks caused by snow load can sometimes be splinted back together.

If you are unsure if your plant is a goner, give us a call. One of our Certified Arborists will be happy to help and possibly save a tree you expected to lose.

We offer **FREE** estimate appointments.
Call our office or request an appointment online at sperrytreecare.com.



© 2023 Sperry Tree Care Co.

CCB# 109012 | LCB# 100201

Sperry Tree Care Co. | sperrytreecare.com | 541-461-1737